

MANLY
GOLF CLUB

A golfer wearing a light blue and white striped polo shirt, dark shorts, and a white cap is captured in the middle of a golf swing on a green. The background shows a lush golf course with trees and a building in the distance under a sunset sky.

Dress Regulations

Dress Regulations

Standard of dress and general appearance outlined in this document will, at all times, be maintained by all members, their guests and visitors to the club. The following guidelines are considered the minimum standard.

Clothing bearing logos must be golf only related and substantial advertising slogans or motifs are not permitted.

The General Manager, Professional Shop or Course Marshall has absolute discretion as to what is acceptable standard of dress for men and women, both on the Course and in the Clubhouse and surrounds. All Clothing worn on the course and practice areas should be specifically designed as Golf wear and stocked by Club Professionals and golf attire retailers.

MEN

Course and Practice Areas

Shirts should be collared or mandarin with short or long sleeves, and must be tucked in at all times. Skivvies with rolled collar or turtle neck golf shirts are also acceptable. Sun UV protection sleeves in plain colours only may be worn.

All pants should be tailored, shorts must be to the knee and should be worn with a belt. Long pants with gathering at the ankles, cargo pants, track suits pants and casual chino styles are unacceptable.

Sport socks must be worn with shorts, low cut sports socks, quarter crew socks in black or white and calf length white socks are acceptable. Black business socks, with shorts, and sockettes are unacceptable.

Hats can be wide brimmed straw, beanie, cap, bucket, or visor style and preferably purchased from golf retail stores.

Shoes must be regulation soft spikes, no high top golf shoes, sneakers, training shoes or joggers.

Clubhouse

Closed Shoes with socks at all times, with the exception of Boat shoes which may be worn without socks.

Dressed shirts may be worn outside pants or tucked in. Golf Shirts must be tucked in at all times.

Smart casual slacks, dress jeans, or shorts are acceptable.

Faded or torn denim jeans, cargo pants, sporting attire or gym gear, beach wear, thongs, bare feet and joggers are not permitted at any time.

Caps and hats are not permitted in the clubhouse at any time.



WOMEN

Course and Practice Areas

Shirts should be collared or mandarin style with short, long or sleeveless, racer back style is unacceptable. Shirts should be tucked in unless designed as a fitted style and can be no longer than the hips. Sun UV protection sleeves in plain colours only may be worn.

Skorts, slacks must be tailored or shorts can be worn, shorts and skorts may be no shorter than mid thigh, Plain coloured 7/8

only length leggings may be worn under skirts or skorts.

Sport socks, sockettes, low cut, quarter crew or knee high socks must be worn at all times, above the knee socks are unacceptable.

Hats can be wide brimmed straw, beanie, cap, bucket, or visor style and preferably purchased from golf retail stores.

Shoes must be regulation soft spikes, no high top golf shoes, sneakers, training shoes or joggers.

Clubhouse

Sandals, court shoes, casual canvas style shoes, platforms and slip on shoes are all acceptable, rubber thongs, joggers, Crocs and Birkenstock shoes are all unacceptable.

Appropriate casual wear, dresses, pants, shorts, dress jeans are all acceptable.

Cargo pants, draw sting wasted pants, stretch pants, ripped or torn jeans, mini skirts, and singlets and sports or gym gear are unacceptable

Hats and caps are not permitted in the clubhouse at any time.

Manly Golf Club Men's Dress Regulations

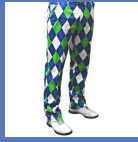
Acceptable Golfing & Practice Areas



Tailored Shorts



Tailored Pants



Patterned Golf Pants



Single Colour Sun Sleeves



Golf Visors



Short Sleeve Collared



Long Sleeve Collared



Skivvy or Turtleneck



Mandarin Collar



Golf Caps



Golf Beanies



Bucket Style



Wide Brimmed



Regulation Soft Spikes



1/4 length in Black or White



Low Cut Sport Socks Black or White

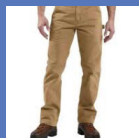


Calf Length Sport Socks White only

Acceptable Clubhouse



Dress Jeans



Chino Style



Tailored Pants



Collared Shirts



Boat Shoes No Socks



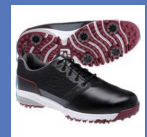
Fashion Sneakers



Smart Casual



Business Shoes



Soft Spike Golf Shoes

for Members and Guests

Unacceptable Golfing & Practice Areas



Denim Jeans



Chinos



Boat Shoes



Sockettes

Unacceptable Golfing, Practice Areas & Clubhouse



Singlets



Shirt
Untucked



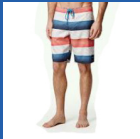
Excessive
Logo



T-Shirts



Hats Inside
Clubhouse



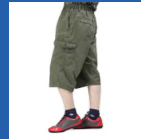
Board Shorts



Cargo Shorts
or Pants



Elastic or
Drawstring



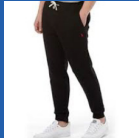
3/4 Length



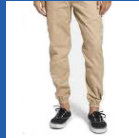
Ripped Jeans



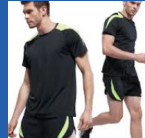
Hoodies incl.
golf specific



Tracksuits



Gathered
Bottom



Gym Gear



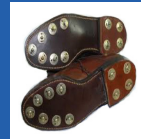
Logo Beanies



Non Golf
Logo Caps



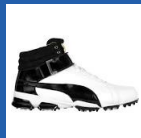
Beach Hats



Metal Spikes



Crocs &
Birkenstocks



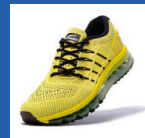
High Tops



Sandal Golf
Shoe



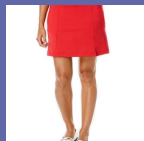
Thongs



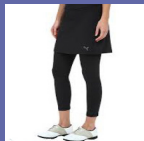
Trainers

Manly Golf Club Women's Dress Regulations

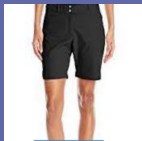
Acceptable Golfing & Practice Areas



Mid Thigh Skirts



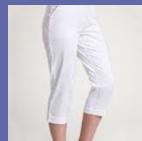
7/8 Leggings & Skirts



Mid Thigh Skirts



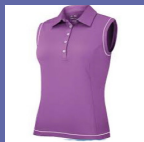
Tailored Pants



Below Knee



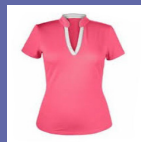
Long Sleeve



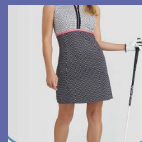
Sleeveless



Short Sleeve



Mandarin Collar



Golf Specific Dresses



Peaked Caps



Golf Beanies



Wide Brimmed



Visors



Straw



Sockettes



Low Cut Sport Socks



Single Colour Sun Sleeves



Regulation Soft Spikes

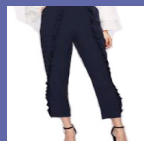


Knee High Socks

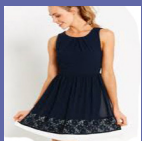
Acceptable Clubhouse



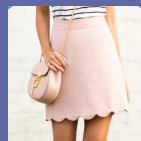
Dress Jeans



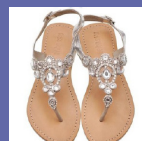
Tailored Pants



Dresses



Skirts Mid Thigh



Fashion Thongs



Tailored Shorts



Fashion Sandals



Fashion Sneakers



Ballet Flats

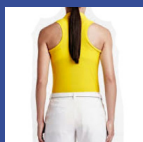
for Members and Guests

Unacceptable Golfing & Practice Areas

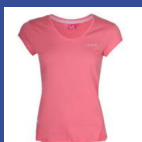


Jeans

Unacceptable Golfing, Practice Areas & Clubhouse



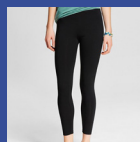
Racer Back



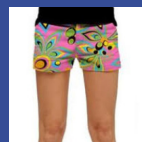
Collarless



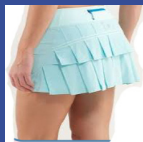
Hoodies incl. golf specific



Leggings



Too Short



Too Short



Singlets



Cargo Pants



Drawstring



Ripped Jeans



Gym Gear



Hats – Inside Clubhouse



Beach Hats



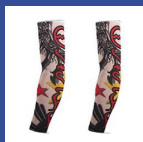
Logo Beanies



Non Golf Logo Caps



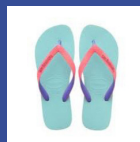
Socks Above Knee



Patterned Sun Sleeves



Sports Sandals



Thongs



Metal Spikes



Crocs



Birkenstocks



Trainers



High Top Golf Shoes



For further information please contact:

Manly Golf Club

38-40 Balgowlah Road, NSW 2095

Or PO Box 166, MANLY, NSW 1655

Tel: (02) 9948 0256

Fax: (02) 9948 3325

Email: reception@manlygolf.com.au

www.manlygolf.com.au